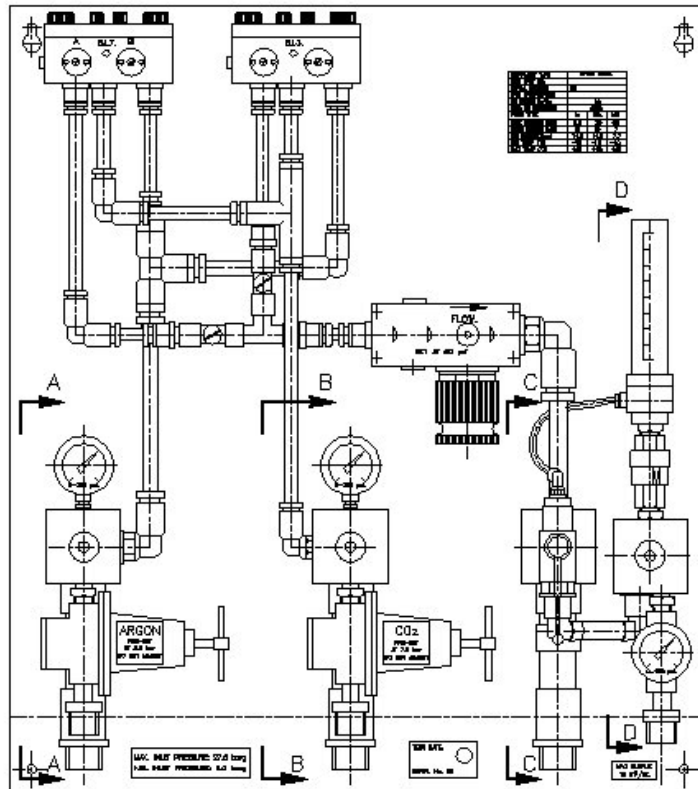


BSL Gas Technologies Limited

Mixing Knowledge and Resource Delivering Thought Provoking Industrial Gas Solutions



BOC WELD PANEL



Gas Mixing Panel – 15m³ With Leak Detection.

Designed to provide a mixed gas of carbon dioxide and argon.

Originally the panel was manufactured in zintec with a gloss white finish. The more recent designs are stainless steel with a satin finish. Either design is suitable for mounting externally.

The panels are wall mounted and very easy to install. Service pipe work and supply gases are connected at the base of the panel and a loose cover secured by two stainless steel fixings completes the assembly.

Inlet regulators and pressure gauges are fitted to both the supply and the delivery side of the panel.

In ideal conditions the panel should be provided with supply gases at 10 barg and the panel would be configured to supply the mixed gas at 3.5 barg. This is a preset design panel. This means that the panel is calibrated prior to despatch to meet the customers application. Adjustments can be made on site with the correct training and instrumentation. Alternatively we offer a next day service for panels returned to our laboratory.

Panels for different supply and delivery pressures are also available on request together with panels designed specifically for the more exotic gases such as Helium, Oxygen and Nitrogen. **Contact us on the numbers below for specific data on you requirements**

BSL Gas Technologies Limited
No 101 Laker Road, Rochester Airport Industrial Estate
Rochester, Kent ME1 3QX

Tel ++ 44 1634 661100 Fax ++ 44 1634 671111
Email info@bslgastech.com www.bslgastech.com

